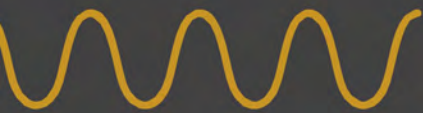


SparqLinq



Next Generation
Gateway

Model:

SL100-2001

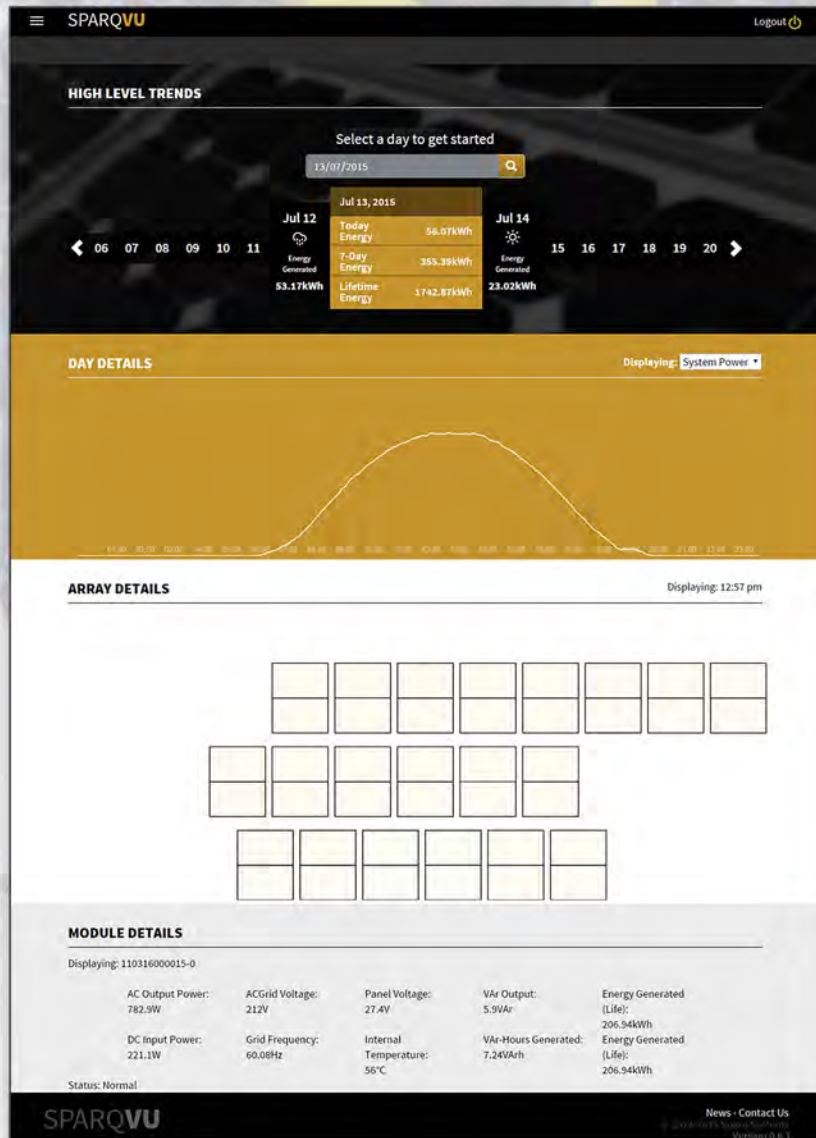
sparqsys.com
info@sparqsys.com



Smartest | Most Reliable | Lowest Cost



Sparq is pleased to introduce the **SparqLinq** - part of a revolutionary, new microinverter system that will reset industry standards of low capital cost, ease of installation, high reliability, high energy harvest, and advanced grid functionality.



Paired with the advanced Q1000 microinverter, solar photovoltaic systems have never been so advanced. Sparq's all new **SparqLinq** is faster, more powerful, and much more feature rich than ever before. An all new user interface backed by industry standard Zigbee wireless communication allows for instant access to real-time information as well as historical performance records from their PV installation.

Using powerful visualization tools, Sparq's user interface simplifies the vast amount of information collected from a PV system and displays it in a quick and easy to understand manner. With the help of the **SparqLinq** cloud-based energy management portal "SparqVu", users can expect to have complete access to their data from anywhere with nearly any device.

Key Features

Smart

- + Provisioning can start as soon as the first module is plugged in, no more waiting for the AC to be turned on to start the process!
- + Powered by an ultra-high performance Linux microcomputer
- + Advanced Zigbee communication allows for fast and reliable communication through walls and ceilings

Detailed

- + Displays Real-Time metrics and stores historical information for the life of your system.
- + Panel-by-panel information is included for all installers to be able to effectively troubleshoot the installation

Easy-to-use

- + Cloud based monitoring allows for easy access from anywhere
- + Modern HTML, CSS, and JavaScript user interface supports nearly any device - no app required!

Quick Installation

- + Automatic detection of connected inverters means quick and painless installation BEFORE the AC is connected
- + Perform an installation layout once and it is automatically synced to your cloud account

Future Proof

- + Complete system updates mean that your SPARQ ecosystem can be updated to support new and improved feature sets.

Detailed Specifications

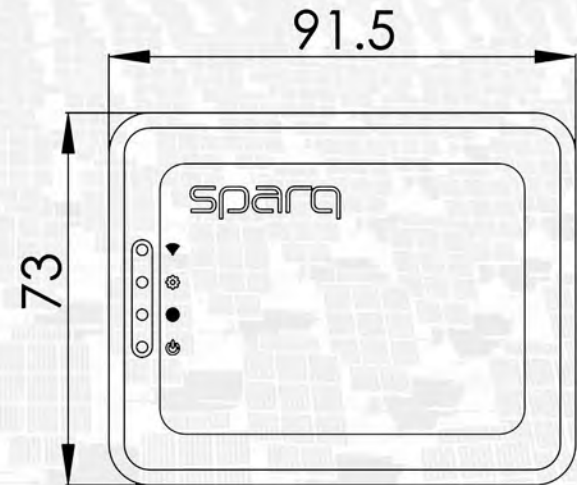
Input Power		COMM-GW-01
AC Voltage Range		100-240V Single Phase
Frequency Range		50-60Hz
Maximum Current		0.4A
DC Input Voltage		5V
DC Input Current		2.5A
Mechanical and Environmental Data		
Cooling		Natural Convection
Ambient Temperature Range		0-50°C (0-122°F)
Enclosure Rating		Indoor only
Dimensions		92mm x 73mm x 37mm (3.6"x2.9"x1.5")
Weight		200g (7oz.)
Mounting		Wall mount or self-standing
Interfaces		
Inverter Communication		Wireless via modified Zigbee-HA
Local Area Network (LAN)		Ethernet 10/100 Mbps, WiFi
USB Host		USB 2.0 Type A Host
Capacity		
Inverter Quantity Supported		Recommended max. 30 inverters (100 Future, Please contact Sparq with you application)
On-Device Data Storage		Up to 25 years
Miscellaneous		
Standard Warranty		2 Years
Regulatory Compliance		FCC Part 15 Class B, CSA22.2 60950-1, UL60950-1



SPARQ

SOLAR JUST GOT SMARTER

Sparq Systems Inc.
 Innovation Park
 945 Princess St.
 Kingston, Ontario
 K7L 3N6, Canada
www.sparqsys.com
info@sparqsys.com



all dimensions in mm

